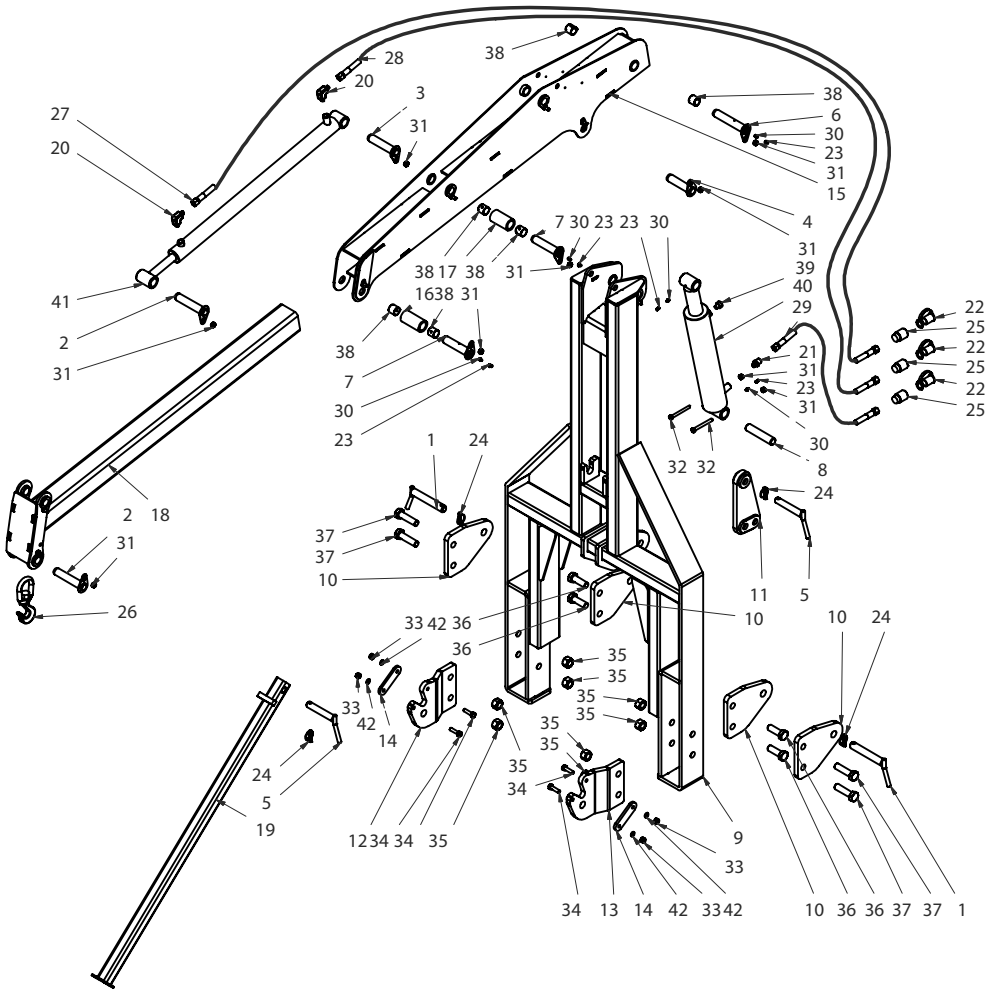


# SPARE PARTS



## SPARE PARTS LIST

Pos	Description	Reference	No.
2	Bolt 30x150	0A017	
3	Bolt 30x140	0A018	5690-15
4	Bolt 30x125	0A019	
6	Bolt 30x170	0A020	
7	Bolt 30x140	0A04	
8	Bolt 30x143	0A30	5690-13
10	Lift bracket, tractor side	8A15	
11	Upper link pin bracket for spreader	8B01	
12	Right lift bracket for spreader	8B1	
13	Left lift bracket for spreader	8B2	
14	Closing bracket	8B3	
16	Roll No1	8C8	
17	Roll No 2	8C9	5690-20
18	Extension arm	8D01	
19	Supporting leg	8M01	
20	Bending 13G C 3/8 CO NU	6.HYD2.3220.A	5690-27
21	Hose bursting valve 13G U 3/8 CO NU (UM13G 3/8)	6.HYD2.5320.A	
22	Cap GPN 920 4984	6.PA30.2310.A	5690-25
23	Grease nipple ø8 GPN 985 B	6.PA30.2350.A	
25	Quick coupling male CHM 12	6.HYD2.8110.A	5690-26
26	Hook	6.PA90.9210.A	
38	Slide bushing PM 30.30 DX	6.PA10.6030.A	
40	Lifting cylinder SA ø55x90 - C375- E700	6.VER1.5540.A	5690-21
41	Extension cylinder DA ø30x50 - C 800 - E 1100	6.VER1.3070.A	5690-22
46	Joint set for lifting cylinder SU-BM02	6.VER5.1150.A	5690-33
47	Joint set for extension cylinder SU-BM03	6.VER5.1160.A	5690-32